

FOR IMMEDIATE RELEASE

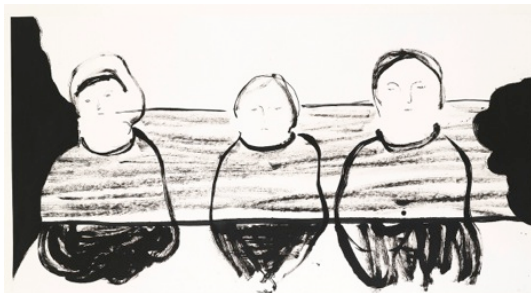
Lulu NGIE

day after day after day

17 August - 7 September 2013

Opening: Saturday, 17 August 2013, 4 - 7 pm

Gallery EXIT 3/F, 25 Hing Wo Street,
Tin Wan, Aberdeen, Hong Kong
Hours: Tue - Sat, 1100 – 1800



Lulu NGIE, Table Sharing, 2012,
ink on paper, 97 x 180 cm

Gallery EXIT is pleased to present "day after day after day" the first solo exhibition of Lulu Ngie with the gallery.

Conceived as a journey through her 10 years of art practice, the exhibition documents the artist's explorations into human nature, her experimentations with composition, and her technical execution in both ink and oil paint.

Against vacant backdrops, ethereal figures emerge under Ngie's brushstrokes. The process of painting bridges a gap between infinite visualizations and a finite form. As György Lukács notes, gesture can be identified as the "point at which reality and possibility intersect". The essence of such is that the artist engages with reality through the fruition of the characters and in turn, these traces of her actions are manifestations of the artist's cognition.

The artist observes that "our world is overloaded with information. Like in an echo chamber, news easily becomes exaggerated and distorted." In these tumultuous times, her paintings of characters absorbed in thought offer a moment of quietude and a place for contemplation.

About the artist:

A graduate from Hong Kong Art School, Lulu Ngie has been painting for the past 10 years. Her ink on paper works follow a tradition in Chinese painting called yi-bi which focuses on sensibility and expressive use of empty space. The emphasis of her human figure drawings are in the use of brushstroke and the flow of lines. In this way, her practice neither aims to attain a true imitation of reality nor carry specific narratives, instead they are reflective of the painter's mental state.

The artist's CV and images of past works can be viewed here:

<http://www.galleryexit.com/ngie-lulu.html>

The artists are available for interview. For high res. images and press enquiries, please email info@galleryexit.com or call +852 2541 1299.



Gallery EXIT 安全口画廊

3/F, 25 Hing Wo Street, Tin Wan, Aberdeen, Hong Kong 香港 香港仔 田灣 興和街 25 號 大生工業大廈 3 樓
+852 2541 1299 info@galleryexit.com www.galleryexit.com

即時發佈

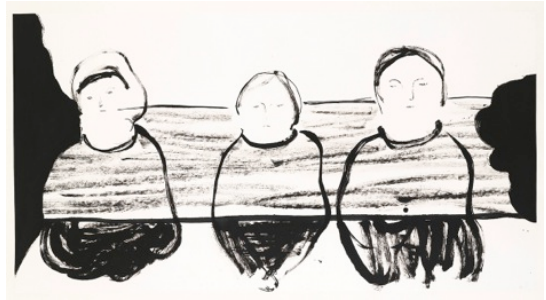
倪鷺露 《明日復明日》

2013 年 8 月 17 日至 9 月 7 日

開幕酒會： 8 月 17 日 (星期六)
下午 4 時至 7 時

地點： Gallery EXIT 香港香港仔田灣
興和街 25 號大生工業大廈 3 樓

辦公時間： 星期二至六 1100 - 1800



倪鷺露 《table sharing》 2013 年
水墨畫, 97 x 180 厘米

《明日復明日》是倪鷺露於 Gallery EXIT 安全口畫廊的首次個人展覽。

該展回顧倪氏十年以來的藝術歷程，這批作品紀錄了她在創作裡對人性的思考，與及她在構圖上、水墨和油畫技術上的各種嘗試。

在空洞背景的烘托下，倪鷺露的筆觸抒發出靜態人物的靈逸氣韻，繪畫的過程則填補了無限想像和有限形式之間的空白。正如匈牙利哲學家盧卡契所言，「姿態」可定義為「真實與可能相遇交錯的一點」，當中精髓在於倪氏透過畫中人與現實接軌，而她的思路也在畫筆揮舞而生的輪廓中油然呈現。

畫者指出：「現今社會資訊過度發達，在群體裡生活就像身處回音室一般，事情容易被誇大扭曲。」在社會氣氛躁動不安的今天，倪鷺露的人物畫像，彷彿凝住寂然瞬刻，創造出一個供靜思默想的寧謐空間。

藝術家簡介：

倪鷺露畢業於香港藝術學院並有十年的創作經驗。她慣於借用傳統中國水墨畫裡意筆的氣韻及留白作為其作品主調。她的人物畫著重於筆觸及線條的流動，並藉此體現出一種不求形似，亦不在於具體敘事的風格，倪鷺露的繪畫是直接表達藝術家的情緒及感觸。

藝術家的履歷和舊作圖片可從此看到：<http://www.galleryexit.com/ngie-lulu.html>

藝術家將會接受各傳媒訪問。

查詢資料及高像素圖片請電郵至 info@galleryexit.com 或致電 +852 2541 1299。



Gallery EXIT 安全口畫廊

3/F, 25 Hing Wo Street, Tin Wan, Aberdeen, Hong Kong 香港 香港仔 田灣 興和街 25 號 大生工業大廈 3 樓
+852 2541 1299 info@galleryexit.com www.galleryexit.com